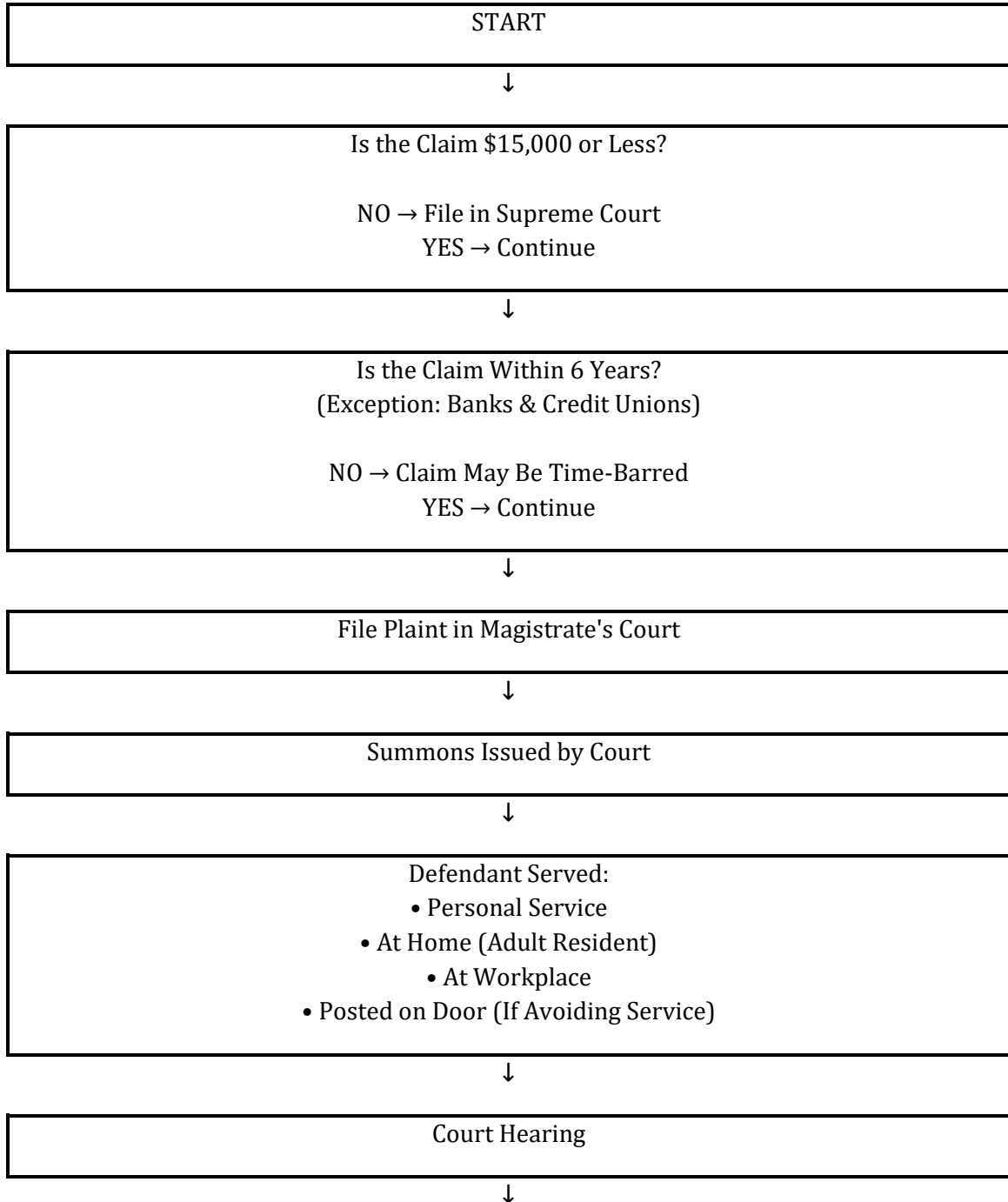


BELIZE MAGISTRATE'S COURT

CIVIL CLAIM PROCESS FLOWCHART (Claims up to \$15,000)



Judgment Given



Was the Judgment Paid?

YES → Case Closed
NO → Enforcement Begins



Writ of Execution
(Bailiff May Seize & Sell Property)



Judgment Debtor Summons
(Debtor Examined About Finances)



Committal Warrant (Last Resort)
Issued Only If Debtor Has Ability to Pay but Wilfully Refuses